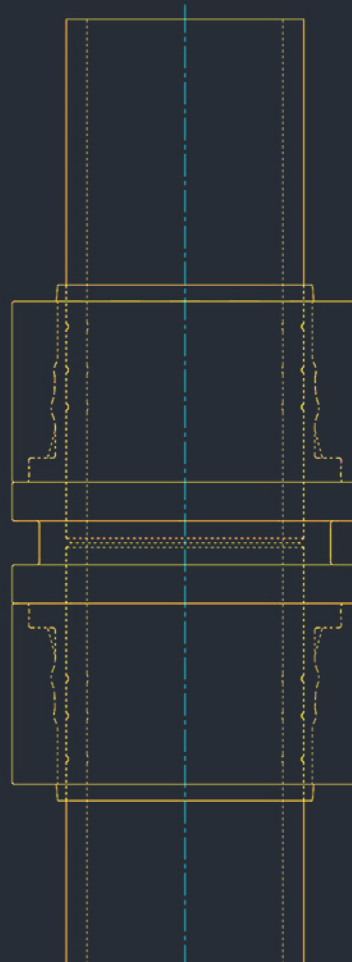


# LINX IAS

CATALOGUE

Connecting



Pipes

# INTRODUCTION

LiNX | AS has developed the Next Generation of mechanically attached fittings: A cold-press pipe connecting solution that creates a permanent all-metal joint, replacing welding.

Inspired by the need and the potential in the market, we as a team from different parts of the globe have come together forming LiNX | AS.

Significant investment in Research and Development has produced a fully Tested and Certified initial product range of Fittings and Tooling.



## GENERAL DESCRIPTION

---

LiNX | AS fittings use Elastic Circumferential Preload Technology to permanently join pipes up to 6" diameter without conventional welding or threading.

This all-metal joint is suited to situations where Cost, Safety and Scheduling are key drivers. The technology can handle pressures up to 1600 bar, and due to their rapid, low-cost installation, LiNX | AS fittings are also advantageous for lower pressure systems.

Insert the pipe in to the Fitting body, and use the Hydraulic tooling to advance two drive rings axially over the fitting body. Radially compressing (Swaging) the fitting body on the OD of the pipe.

LiNX | AS fittings with sliding compression that operates on the HAPS Principle.

The pipe is compressed first elastically and then plastically during installation.

The body of the fitting has circumferential machined sealing rings which grip and seal the pipe OD, forming a gas tight and metal to metal seal.

A dedicated installation tool is also a part of the product that performs the cold work formation of the joint.



**Ideal for situations where Cost, Safety and Scheduling are key drivers. The technology can handle pressures up to 1600 bar**

## PRODUCT RANGE

### SIZES:

Core Range: ½" – 2" (20-60mm metric)  
Full Range\*: ¼" – 6" (6-80mm metric)

### PIPE SCHEDULES:

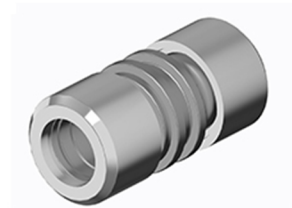
Standard - 40/80  
Special Order\* – 120/160/XXS,  
Thin wall piping below SCH 40 can be  
used with Compatability insert

### FITTING TYPES:



SOCKET WELD ADAPTER

In this fittings, one end is connected to the pipe by using our method and the another end directly welded to the run pipe or Valves.



STRAIGHT FITTING

A fitting or adapter is used in pipe systems to connect straight sections of pipe or tube.



FEMALE NPT ADAPTER

An adapter could be fitted on the end of a plain pipe to allow a Female NPT threaded connection at the other side of the adapter.



COUPLING REDUCER

A fitting or adapter is used in pipe systems to connect straight sections of pipe or tube.

### MATERIALS:

Standard – AISI 4140 & 316L  
Specialist – 304 and 2205/2507

- Other Specific Materials for joints can be considered and developed against special requirement.

### NOTE:

Possibility of Electrolysis, Deposition and Crevice Corrosion on usage of dissimilar materials.

## FITTING TYPES:



**FEMALE ADAPTER**

An adapter could be fitted on the end of a plain pipe to allow a Female threaded connection at the other side of the adapter.



**BLIND END**

In this type of Couplings are used to stop the flow in the pipe linings.



**MALE ADAPTER**

An adapter could be fitted on the end of a plain pipe to allow a Male threaded connection at the other side of the adapter.



**MALE NPT ADAPTER**

An adapter could be fitted on the end of a plain pipe to allow a Male NPT threaded connection at the other side of the adapter.

# Contact us

## Regional Offices

NORDIC

EUROPE

AMERICAS

MENA

ASIA PACIFIC

## Registered Office

### LYNX | AS FTZ

Business Center Al Shmook  
Building,  
UAQ Al Quwain, UAE

Email : [sales@connectingpipes.com](mailto:sales@connectingpipes.com)  
Web : [www.connectingpipes.com](http://www.connectingpipes.com)

## Regional Contact

Email:  
[nordic@connectingpipes.com](mailto:nordic@connectingpipes.com)  
[europe@connectingpipes.com](mailto:europe@connectingpipes.com)  
[americas@connectingpipes.com](mailto:americas@connectingpipes.com)  
[mena@connectingpipes.com](mailto:mena@connectingpipes.com)  
[apac@connectingpipes.com](mailto:apac@connectingpipes.com)

